

COMPLETE SUPPLY

For projects that need a **complete handling solution**, Credeblug offers complementary material to its underwater machine range:

Underwater electric plug

Cable reel

Control panel

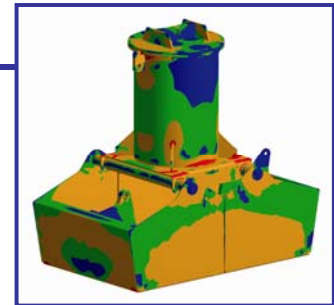
Chain hoist



- Underwater plug: for a fast and **simple connection between grab and cable reel** (IP 67).
- Electric cable reel: synchronization between the machine and winding velocities with a **constant torque applied to the necessary cable length** in every case.
- Control panel: it incorporates all the **indicators and necessary safety elements** for grab's control and operation.
- Chain hoist: **single rail**, with double speed components in its movements and **variable speed drive** incorporated for the longitudinal and transversal travelling movements.

DESIGN AND SIMULATION

- Our design office develops each design according to **F.E.M. 1001 Section I:1998, UNE-58132 and UNE-EN 13155** using the latest 3D and CAD/CAM tools.
- Each new design is validated and optimised using **Finite Elements Analysis** technique in the way to analyse fatigue effects and warranty **2.000.000 cycles** for components' and machines' working life.

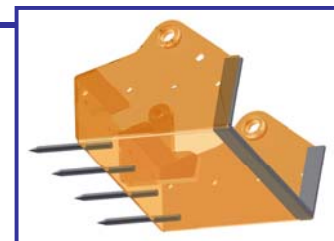


ELECTRO-HYDRAULIC SYSTEM FUNCTIONING

MOTOR REVERSAL		ELECTRICALLY OPERATED VALVE		Parker Hydraulics
Wire quantity:	4	Wire quantity:	7	
Pump type:	Piston pump (fix flow)	Pump type:	Gear pump (fix flow) Piston pump (fix flow)	

MATERIALS

- Structure manufactured in **S355 J2G3** rolled steel (elastic yield 510-610 N/mm²).
- All the models are supplied completely prepared for their immediate running including the **electrical installation and complete internal wiring**.
- In addition to the **cleaning combs and draining holes (included)**, it is possible to install **interchangeable manganese** wear resistant teeth (up to 500 HB) into grab's valves in the way to **improve machine's penetration into the material**.



ANTICORROSIVE TREATMENT

- The whole underwater BLUG range is **protected from the corrosion through the application of 2 EPOXI RUSTPREVENTIVE - ZINC PHOSPHATE 50 microns priming coats** cured with polyamide and **3 coats' finish of PAINTING TAR-EPOXI** in black colour, cured with 2 components' polyamide and a thickness of 50 microns/each.

CERTIFICATION

- Possibility to certify any model in **ATEX 0/20, 1/21 or 2/22 zones** for explosive atmospheres.

